

bear

Estate Agents



A beautiful one bedroom flat located in Westcliff -on-Sea. The property boasts a private rear garden, spacious living area, kitchen with appliances and a three piece bathroom suite. Available 1st September!

- Spacious First Floor Flat
- Double Bedroom
- Kitchen with Appliances
- Gas Central Heating
- Private Rear Garden
- Modern Decor
- Double Glazing

Ronald Park

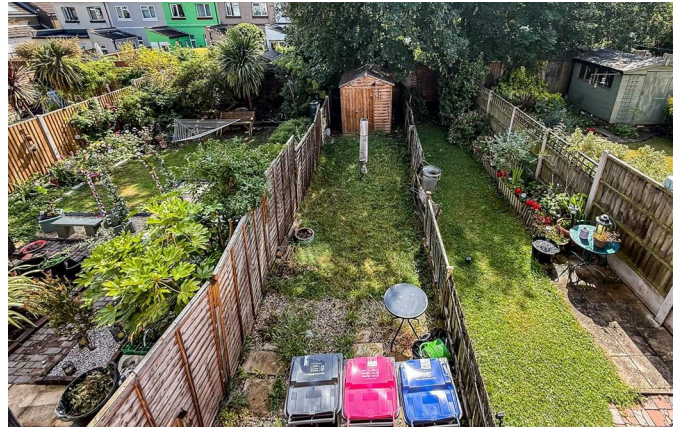
Westcliff-On-Sea

£1,100 Per Month
Per Month



Ronald Park Avenue

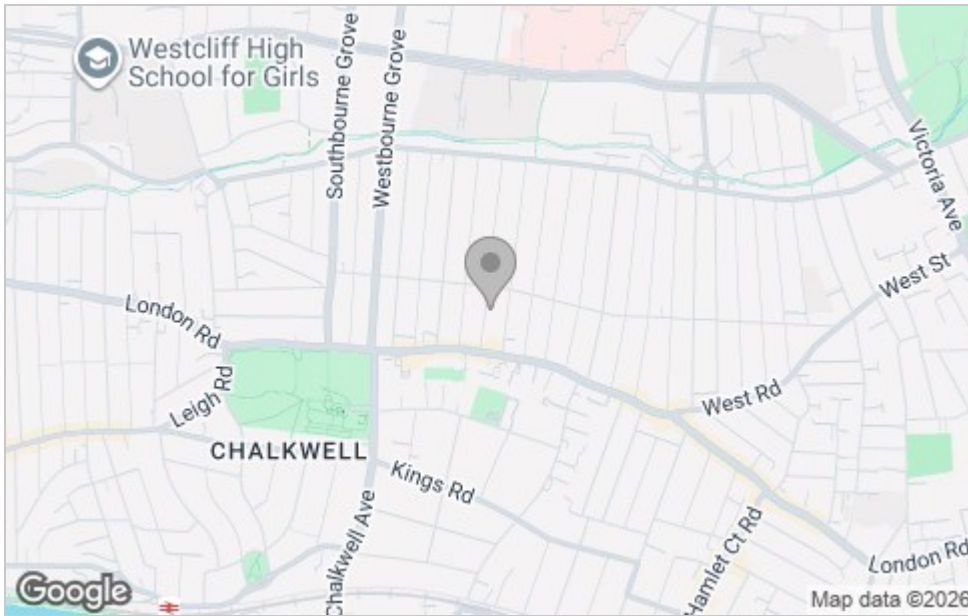




Floor Plan



Area Map



Viewing

Please contact our Westcliff-on-Sea Office on 01702 899 780 if you wish to arrange a viewing appointment for this property or require further information.

These particulars, whilst believed to be accurate are set out as a general outline only for guidance and do not constitute any part of an offer or contract. Intending purchasers should not rely on them as statements of representation of fact, but must satisfy themselves by inspection or otherwise as to their accuracy. No person in this firm's employment has the authority to make or give any representation or warranty in respect of the property.

797 London Road, Westcliff-on-Sea, Essex, SS0 9SY

Office: 01702 899 780 info@bearlettings.co.uk

Energy Efficiency Graph

